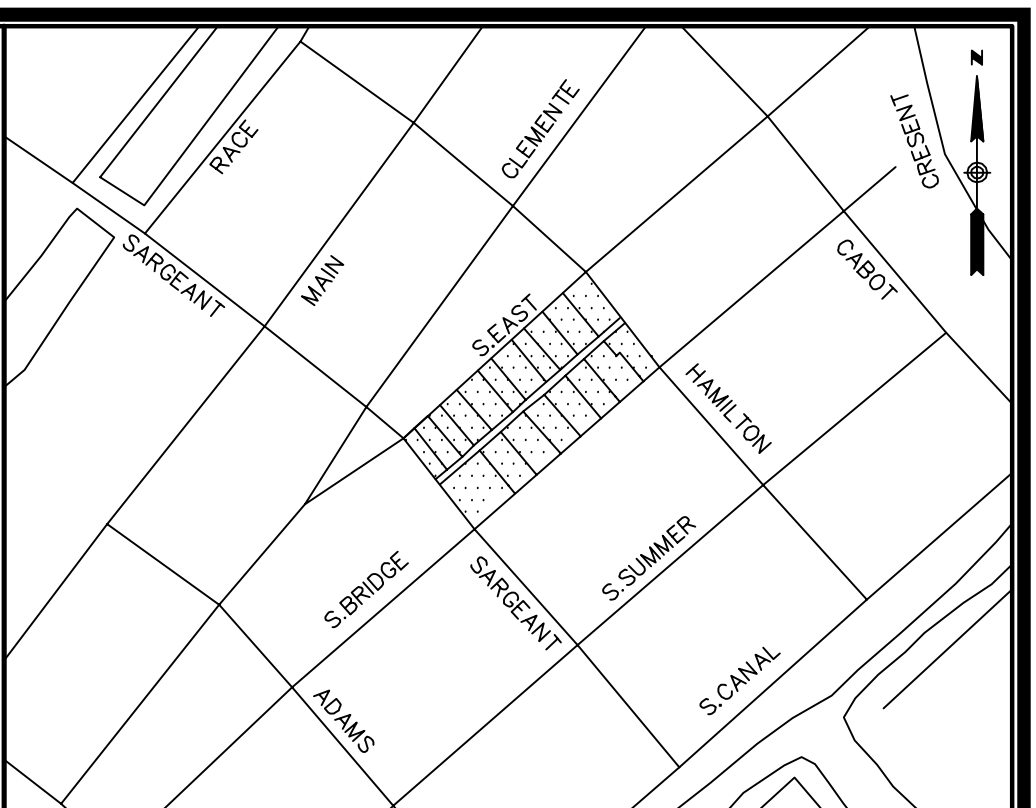
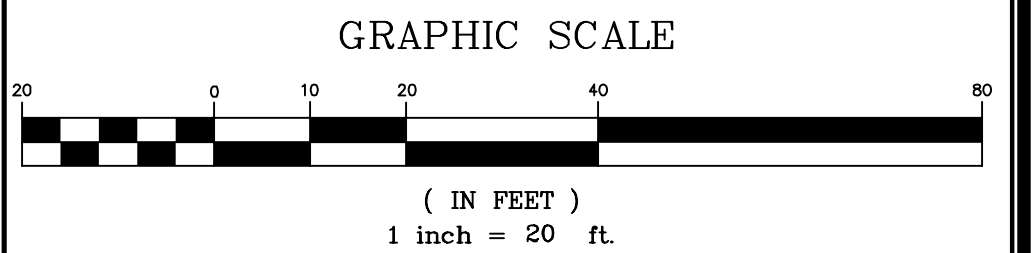


**UTILITY STATEMENTS**  
 THE LOCATION OF THE UTILITIES AS SHOWN HEREON HAVE BEEN COMPILED FROM VISIBLE STRUCTURES AND INFORMATION OBTAINED FROM VARIOUS SOURCES. THE ACTUAL LOCATION OF ALL UTILITIES AND UNDERGROUND STRUCTURES SHALL BE CONSIDERED APPROXIMATE AND SHALL BE VERIFIED BY THE OWNER PRIOR TO ANY CONSTRUCTION. THE SURVEYOR MAKES NO GUARANTEES THAT THE UNDERGROUND UTILITIES SHOWN COMPRISE ALL SUCH UTILITIES IN THE AREA, EITHER IN SERVICES OR ABANDONED. THE SURVEYOR FURTHER DOES NOT WARRANT THAT THE UNDERGROUND UTILITIES SHOWN ARE IN THE EXACT LOCATION INDICATED.



**LOCUS MAP (N.T.S.)**

- NOTES**
1. THIS PLAN WAS PREPARED FROM AN ACTUAL ON THE GROUND FIELD SURVEY CONDUCTED BY WSP IN JUNE 2017.
  2. THE HORIZONTAL DATUM SHOWN HEREON REFERENCES THE MASSACHUSETTS STATE PLANE COORDINATE SYSTEM NAD83.
  3. THE VERTICAL DATUM SHOWN HEREON REFERENCES NAVD88.
  4. THE UNDERGROUND UTILITY INFORMATION SHOWN HEREON LABELED WITH AN (R) ARE FROM RECORD DOCUMENTS. ADDITIONAL FIELD INVESTIGATION WILL BE REQUIRED BY OTHERS TO DETERMINE THE ACTUAL PIPE SIZE(S) AND TYPE(S).
  5. THE BORINGS AND TEST PITS SHOWN HEREON WERE SEEN IN THE FIELD BY WSP'S SURVEY TEAM AND THEREFORE LOCATED. WSP IS NOT SURE WHO CONDUCTED THAT WORK.



REVISION	DATE	DESCRIPTION
---	---	---

**EXISTING CONDITIONS SURVEY**  
 S.EAST, S.BRIDGE AND HAMILTON STREETS  
 HOLYOKE, MASSACHUSETTS  
 PREPARED FOR  
**TIGHE & BOND, INC.**



- LEGEND**
- |   |  |   |
|---|--|---|
| <ul style="list-style-type: none"> <li>— PROPERTY LINE</li> <li>— ABUTTERS</li> <li>— OVERHEAD WIRES</li> <li>— CHAIN LINK FENCE</li> <li>— WOOD FENCE</li> <li>— GAS LINE</li> <li>— UNDERGROUND TELEPHONE</li> <li>— UNDERGROUND ELECTRIC</li> <li>— SEWER LINE</li> <li>— DRAIN LINE</li> <li>— WATER LINE</li> <li>— INTERMEDIATE CONTOURS</li> <li>— INDEX CONTOURS</li> </ul> | <ul style="list-style-type: none"> <li>⊙ WATER MANHOLE</li> <li>⊕ TELEPHONE MANHOLE</li> <li>⊕ TEST PIT</li> <li>⊕ DRAIN MANHOLE</li> <li>⊕ SEWER MANHOLE</li> <li>⊕ UNKNOWN MANHOLE</li> <li>⊕ BOLLARDS</li> <li>⊕ BASKET BALL HOOP</li> <li>⊕ POST</li> <li>⊕ MONITORING WELL</li> <li>⊕ GAS VALVE</li> <li>⊕ WATER VALVE</li> <li>⊕ DECIDUOUS TREE</li> <li>⊕ UTILITY POLE WITH TRANSFORMER</li> <li>⊕ UTILITY POLE</li> <li>⊕ UTILITY POLE WITH LIGHT</li> </ul> | <ul style="list-style-type: none"> <li>— PVC POLYVINYL CHLORIDE</li> <li>— CRW CONCRETE RETAINING WALL</li> <li>— WC WOOD CURB</li> <li>— LSA LANDSCAPED AREA</li> <li>— DYL DOUBLE YELLOW LINE</li> <li>— DHF DRILL HOLE FOUND</li> <li>— IRF IRON ROD FOUND</li> <li>— BORING</li> <li>⊕ ELECTRIC METER</li> <li>⊕ ROUND CATCH BASIN</li> <li>⊕ CATCH BASIN</li> <li>— SIGN</li> <li>⊕ HYDRANT</li> </ul> |
|---|--|---|

Drawn By LMA	Date JUNE 27, 2017	Job No. 188298X
Surveyed By TC & EC	Scale 1" = 20'	Sheet No. 1 OF 1
Checked By DPP		
Book No. CHA-63		

188298X-1.dwg

**NOTES**

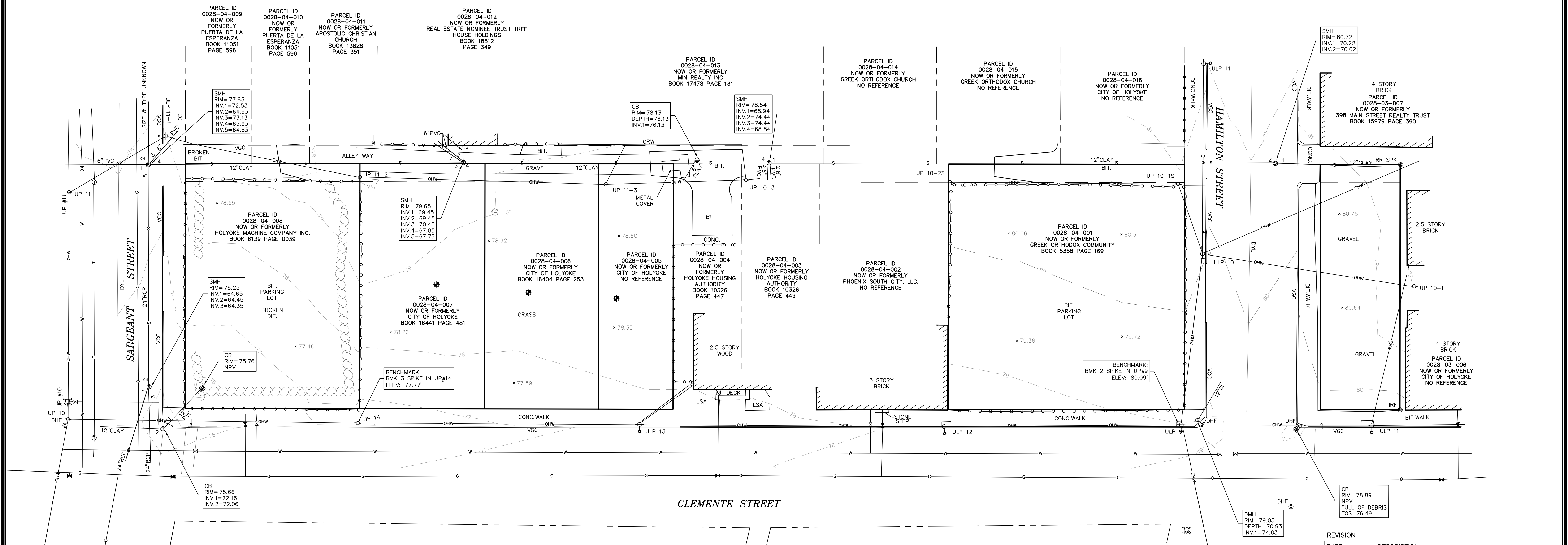
1. THIS PLAN WAS PREPARED FROM AN ACTUAL ON THE GROUND FIELD SURVEY CONDUCTED BY WSP IN JUNE 2017.
2. THE HORIZONTAL DATUM SHOWN HEREON REFERENCES THE MASSACHUSETTS STATE PLANE COORDINATE SYSTEM NAD83.
3. THE VERTICAL DATUM SHOWN HEREON REFERENCES NAVD88.
4. THE UNDERGROUND UTILITY INFORMATION SHOWN HEREON LABELED WITH AN (R) ARE FROM RECORD DOCUMENTS. ADDITIONAL FIELD INVESTIGATION WILL BE REQUIRED BY OTHERS TO DETERMINE THE ACTUAL PIPE SIZE(S) AND TYPE(S).
5. THE BORINGS AND TEST PITS SHOWN HEREON WERE SEEN IN THE FIELD BY WSP'S SURVEY TEAM AND THEREFORE LOCATED. WSP IS NOT SURE WHO CONDUCTED THAT WORK.

**UTILITY STATEMENTS**

THE LOCATION OF THE UTILITIES AS SHOWN HEREON HAVE BEEN COMPILED FROM VISIBLE STRUCTURES AND INFORMATION OBTAINED FROM VARIOUS SOURCES. THE ACTUAL LOCATION OF ALL UTILITIES AND UNDERGROUND STRUCTURES SHALL BE CONSIDERED APPROXIMATE AND SHALL BE VERIFIED BY THE OWNER PRIOR TO ANY CONSTRUCTION. THE SURVEYOR MAKES NO GUARANTEES THAT THE UNDERGROUND UTILITIES SHOWN COMPRISE ALL SUCH UTILITIES IN THE AREA, EITHER IN SERVICES OR ABANDONED. THE SURVEYOR FURTHER DOES NOT WARRANT THAT THE UNDERGROUND UTILITIES SHOWN ARE IN THE EXACT LOCATION INDICATED.

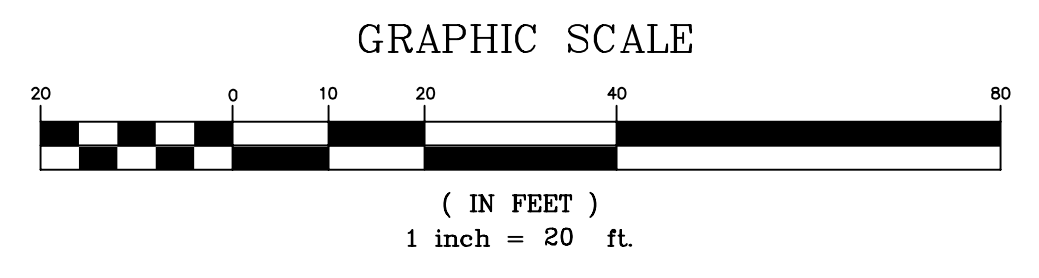


LOCUS MAP (N.T.S.)



**LEGEND**

- |       |                       |   |                               |   |                             |
|-------|-----------------------|---|-------------------------------|---|-----------------------------|
| —     | PROPERTY LINE         | ⊕ | WATER MANHOLE                 | — | PVC POLYVINYL CHLORIDE      |
| - - - | ABUTTERS              | ⊕ | TELEPHONE MANHOLE             | — | CRW CONCRETE RETAINING WALL |
| —     | OVERHEAD WIRES        | ⊕ | TEST PIT                      | — | WC WOOD CURB                |
| —     | CHAIN LINK FENCE      | ⊕ | DRAIN MANHOLE                 | — | LSA LANDSCAPED AREA         |
| —     | WOOD FENCE            | ⊕ | SEWER MANHOLE                 | — | DYL DOUBLE YELLOW LINE      |
| —     | GAS LINE              | ⊕ | UNKNOWN MANHOLE               | — | DHF DRILL HOLE FOUND        |
| —     | UNDERGROUND TELEPHONE | ⊕ | BOLLARDS                      | — | IRF IRON ROD FOUND          |
| —     | UNDERGROUND ELECTRIC  | ⊕ | BASKET BALL HOOP              | ⊕ | ⊕ BORING                    |
| —     | SEWER LINE            | ⊕ | POST                          | ⊕ | ⊕ ELECTRIC METER            |
| —     | DRAIN LINE            | ⊕ | MONITORING WELL               | ⊕ | ⊕ ROUND CATCH BASIN         |
| —     | WATER LINE            | ⊕ | GAS VALVE                     | ⊕ | ⊕ CATCH BASIN               |
| —     | INTERMEDIATE CONTOURS | ⊕ | WATER VALVE                   | ⊕ | ⊕ SIGN                      |
| —     | INDEX CONTOURS        | ⊕ | DECIDUOUS TREE                | ⊕ | ⊕ HYDRANT                   |
| —     | SHRUB LINE            | ⊕ | UTILITY POLE WITH TRANSFORMER | ⊕ |                             |
|       |                       | ⊕ | UTILITY POLE                  | ⊕ |                             |
|       |                       | ⊕ | UTILITY POLE WITH LIGHT       | ⊕ |                             |



REVISION	
DATE	DESCRIPTION
---	---
<b>EXISTING CONDITIONS SURVEY</b>	
SARGEANT, HAMILTON AND CLEMENTE STREETS HOLYOKE, MASSACHUSETTS PREPARED FOR TIGHE & BOND, INC.	
<b>wsp</b>	
WSP USA Inc. 155 Main Dunstable Rd, Suites 120 & 125 Nashua, NH 03060 603.595.7900	
Drawn By LMA	Date JUNE 27, 2017
Surveyed By TC & EC	Job No. 188298X
Checked By DPP	Scale 1" = 20'
Book No. CHA-63	Sheet No. 1 OF 1